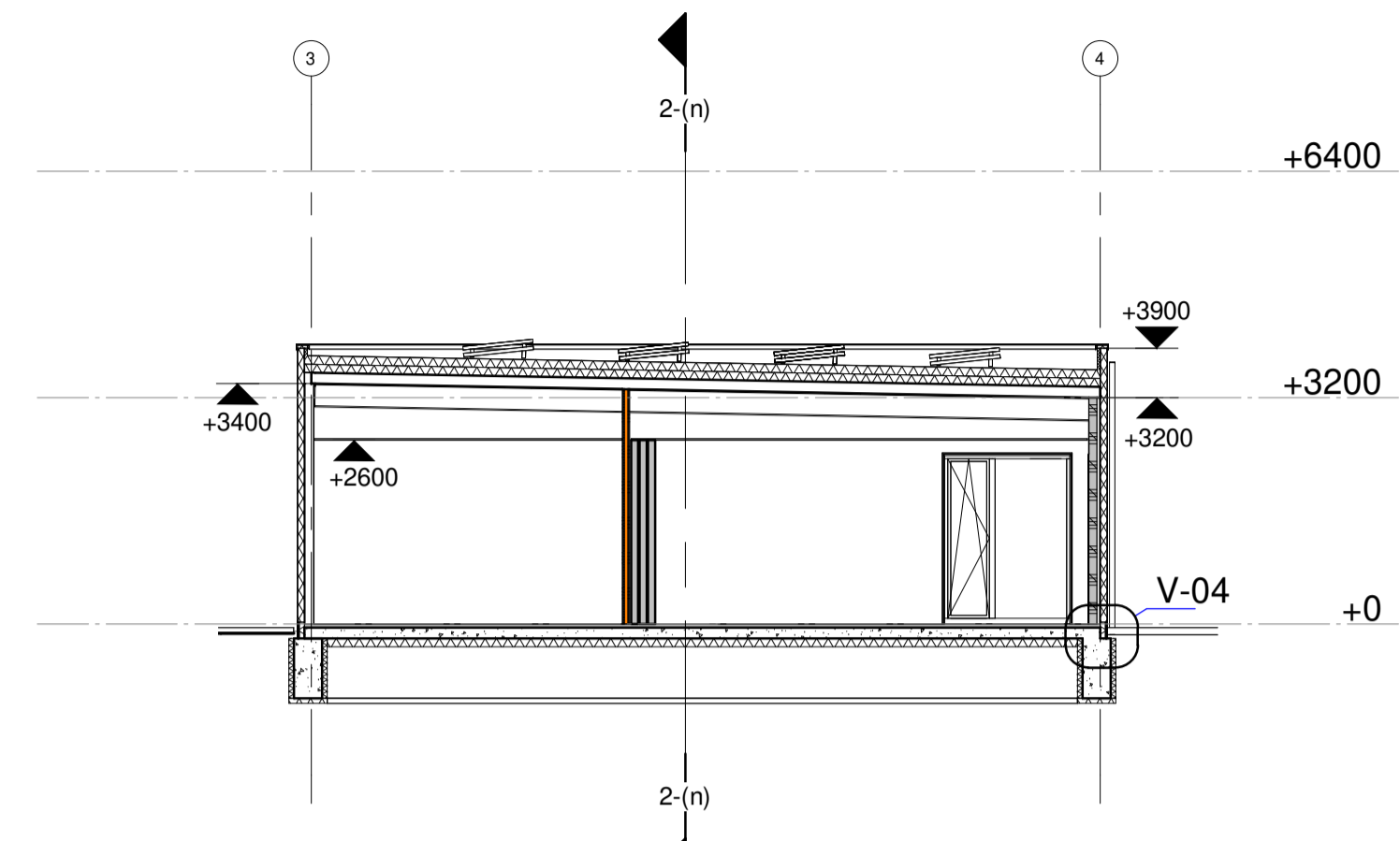
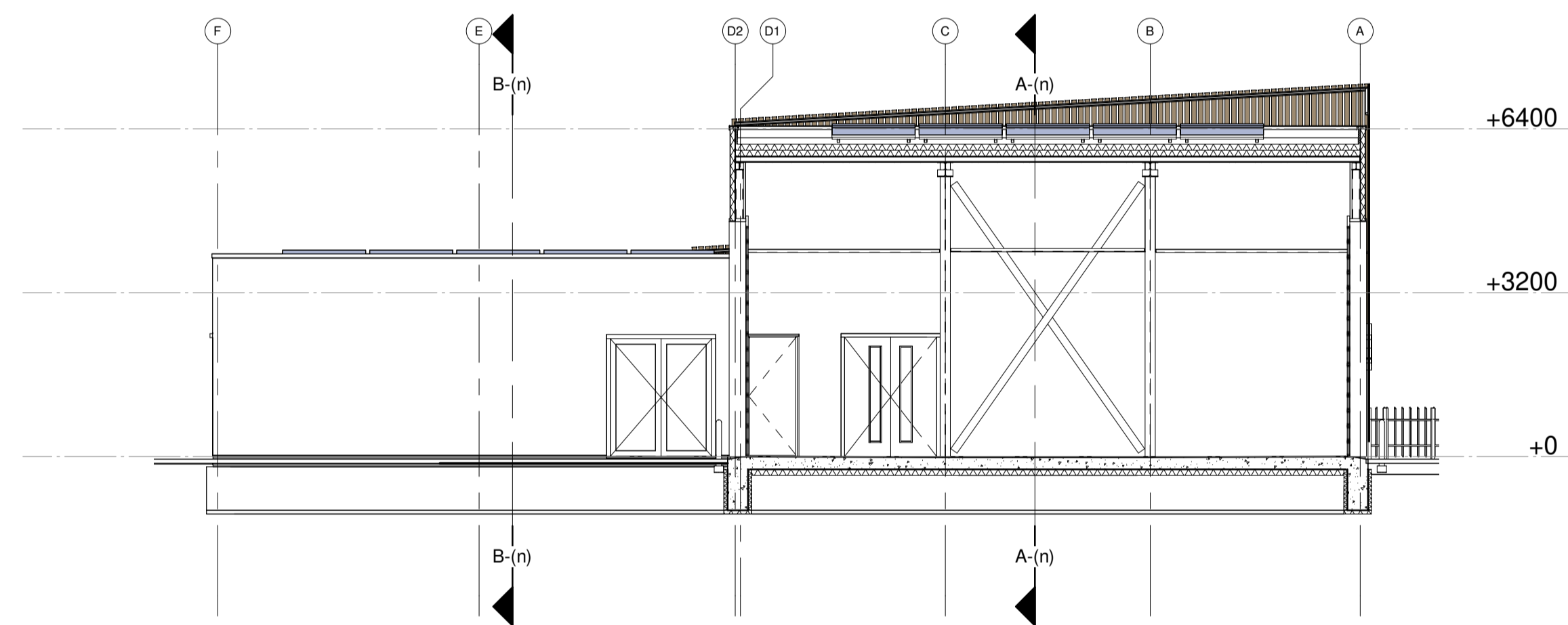


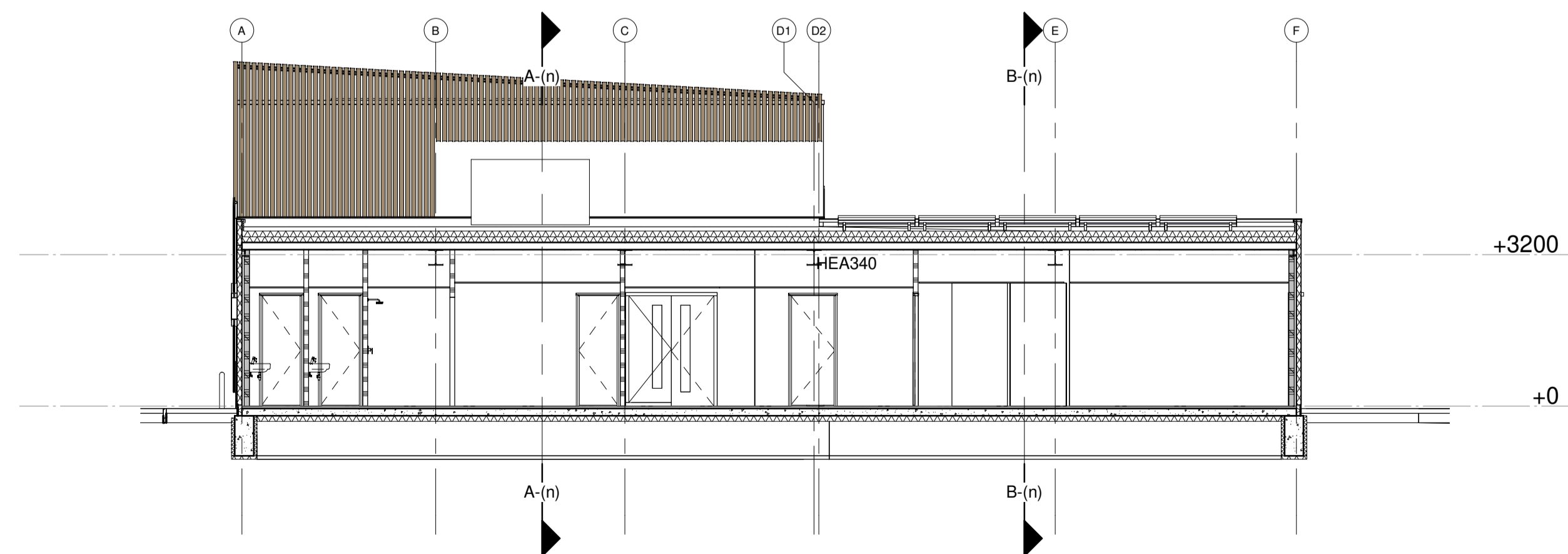
Doorsnede A-A



Doorsnede B-B



Doorsnede 1-1



Doorsnede 2-2



**Nieuwbouw brandweerkazerne te Almen**

**Opdrachtgever**

Gemeente Lochem  
Postbus 17  
7240 AA Lochem

**Projectadres**

Binnenweg Almen

**bct architecten, ingenieurs en adviseurs bv**

Capitool 15  
Postbus 1056  
7500 BB Enschede  
+31 (0)53 4 884 884  
info@bctarchitecten.nl  
www.bctarchitecten.nl

**Onderwerp**

doorsneden

**Fase**

Definitief Ontwerp

**Formaat**

A1 (841 x 594 mm)

**Schaal**

1 : 100

**Datum**

09-02-2021

**Projectnummer**

20209011

**Architect**

ir. Walter Kemperman

**Projectleider**

ing. Esther Bleumink

**Modelleur**

ing. Erik Wolters

**DO-300**